

THE 2024 OP2



DRY WEIGHT: 3244 LBS | GVWR: 4400

BEDS: 1 QUEEN BED

WATER: 33 GALLONS - 1 SEAFLO PUMP - ECCOTEMP WATER HEATER

BATHROOM/SHOWER: LARGE PRIVACY ROOM - HOT WATER SHOWER

OPTIONS: _____

HEATER

CRUISEMASTER DO35 HITCH

SOLAR & LITHIUM BATTERIES

AIR ANNEX OR AIR CANOPY

BIKE RACK CARRIERS

CINEMA SYSTEM

12V FRIDGE

REMOTE TRAILER MOVER

AIR WINDBREAK

OPUS
OFF-ROAD



“THE AWARD-WINNING AIR SYSTEM EXPANDS TO ABOUT EIGHT FEET TALL AND 121 SQUARE FEET IN TOTAL”





OFF-ROAD RUGGED

The OP2 has a single bed lid that opens to a large queen bed and spacious lounge. The exterior was designed with an extended front tool box, stackable storage and a built-in hot water shower.

The OP2 features an all-terrain chassis with Off-Road 15" tires and independent coil suspension, built to follow any 4WD vehicle through the roughest terrain. The 2024 OP2 comes with a 33 gallon freshwater supply and 3-4 days of built in battery life (with solar power and lithium battery options). The large tent extension works as a space for hot water showers and provides privacy so you can get off grid in comfort.

OUTDOOR KITCHEN

The OP2 stainless steel kitchen slides out to a fully-functioning offgrid outdoor cooking experience so you never miss a moment of the action.

The upgraded front toolbox provides stackable storage with tons of pantry space and a 63 QT 12v fridge. The 2023 models also have LED lighting running along the top of the stove and spicerack for added visability at night.

OP2 KITCHEN FEATURES:

- 4-burner stove
- Wind guards
- Stainless steel chopping board
- Sink with running water
- LED outdoor cooking light
- 12v electric fridge.
- Hot water connects

AIR TENT TECHNOLOGY

The OP2 features our innovative, multi-award winning AIR OPUS tent, which allows you to effortlessly set up your tent at the touch of a button. Our patented AIR Inflation technology incorporates a built-in compressor which inflates the tent in just 2 minutes. The AIR tent frame is built to withstand rough weather conditions while providing you with a bright, spacious, comfortable living space.



COVER OPTIONS

The 2024 models include the option for an AIR Canopy or AIR Annex. Both options connect directly to the AIR tent and can be packed-down with your camper during travel and storage.

AIR ANNEX

The new lightweight AIR Annex includes two extra bedroom pods and an extended living area. This option takes an additional 2 - 3 minutes to inflate with your on-board air compressor. With a fully enclosed living space and a large protective floor, the AIR Annex adds space to sleep an additional 4 adults.

AIR CANOPY

The AIR Canopy is a lighter option to the full AIR Annex. Extending the full width of your camper, the AIR Canopy takes an additional 90 seconds to inflate and provides full kitchen coverage for protection from rain and sun.

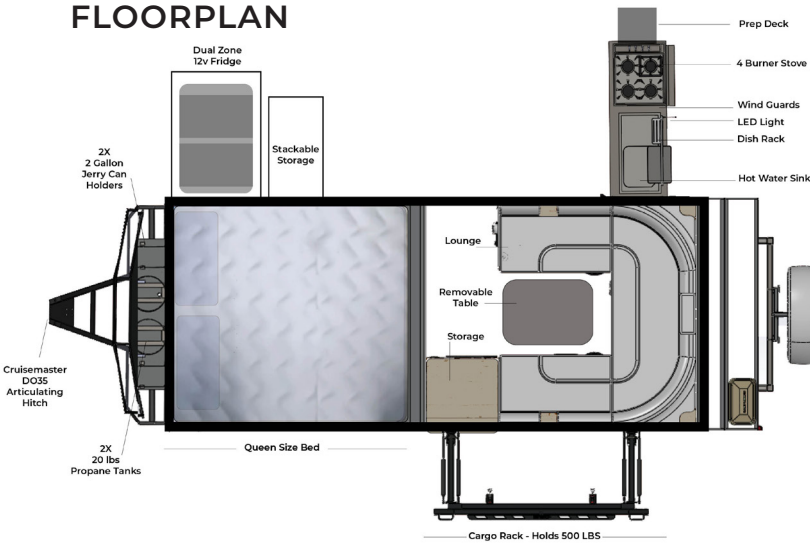




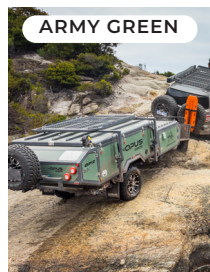
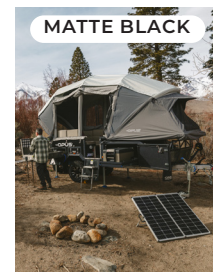
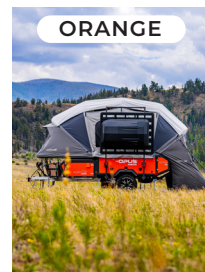
SPECIFICATIONS

DIMENSIONS (OPEN)	21'4" X 6'10"
DIMENSIONS (CLOSED)	18'4" (W. SPARE) X 6'5"
GROUND CLEARANCE	12.4"
RIDE HEIGHT	5'7" (WITH CARGO RACK)
BED SIZE	6'2" X 5'5" X 4"
ELECTRICS	12V & 120V
DRY WEIGHT	3,244 LBS
TONGUE WEIGHT	355 LBS
GVWR	4400 LBS
LOAD CAPACITY	1100 LBS
CARGO RACK CAPACITY	500 LBS
TOWING	7-PIN BLADE

FLOORPLAN



COLORS



FEATURES

OPTIONAL

- Lithium Battery Upgrade
- Truma VarioHeat Furnace 16,000BTU*
- Portable Cassette Toilet
- LED Lighting w/ Dimmer Switches
- OPUS AIR Inflatable Annex
- OPUS AIR Inflatable Canopy
- Fold Over Cargo Rack*
- Rhino Roof Rack Bars*
- Kayak Carrier (only with Rhino Bars)
- Single Bike Carrier
- Water & Waste Carriers 6gl (each)
- Enduro Remote Control Trailer Mover
- Nemesis Wheel Lock
- Zamp 140Watt Solar System
- Upgraded Fridge ARB 63QT
- ARK Dual Wheel Tongue Jack

STANDARD

- AIR OPUS Inflatable AIR Tent
- Interior Ceiling Lighting
- Front Stone Gaurd
- Interior Floor Lighting w/ Dimmer
- Slide out Kitchen with Stove & Sink
- 33gl On-board Water System
- 12v Refrigerator
- Stereo System w/ 2 x speakers
- Propane & Water Can Holders
- Solar Panel Port
- 265/75R15 Off Road Mud Tires
- Electric Drum Brakes & E-brake
- Leatherette Club Lounge
- External LED Lighting
- Fold-down table
- Exterior Shower (Cold Water)
- Shore Power Extension Lead
- Off-Road Articulating Hitch

